



PREPARING STUDENTS FOR AN  
**EXTRAORDINARY LIFE.**



Colorado Rocky Mountain School

*Carbondale, CO*



# WELCOME TO COLORADO ROCKY MOUNTAIN SCHOOL



CRMS is an ideal learning environment for high school students because of its intentional, research-based programming, deliberate small size, and unrivaled geographic location. **The CRMS experience is designed to address a transformative time in a young adult's life.** On this threshold to adulthood, we understand high school-age students need to feel connected, seen, and heard, in order to fulfill their potential and move into their next phase of life with confidence, competence, and an orientation toward learning and engagement.

## *Connected*

Through an integrated curriculum that weaves academics, outdoor adventure, service, and the arts, CRMS students are connected with one another, their teachers, their community, and the larger world. These connections allow students to make authentic and meaningful contributions to their school community, expand their potential, take appropriate risks in a supportive environment, and take their learning to an exceptional level.

## *Seen*

We are deliberately sized so that every student has our full attention. Students at CRMS are known as individuals and celebrated in this community. Every student has the opportunity to be applauded, no matter their strength – academics, athletics, community service, artistic abilities, or for their own unique characteristics.

## *Heard*

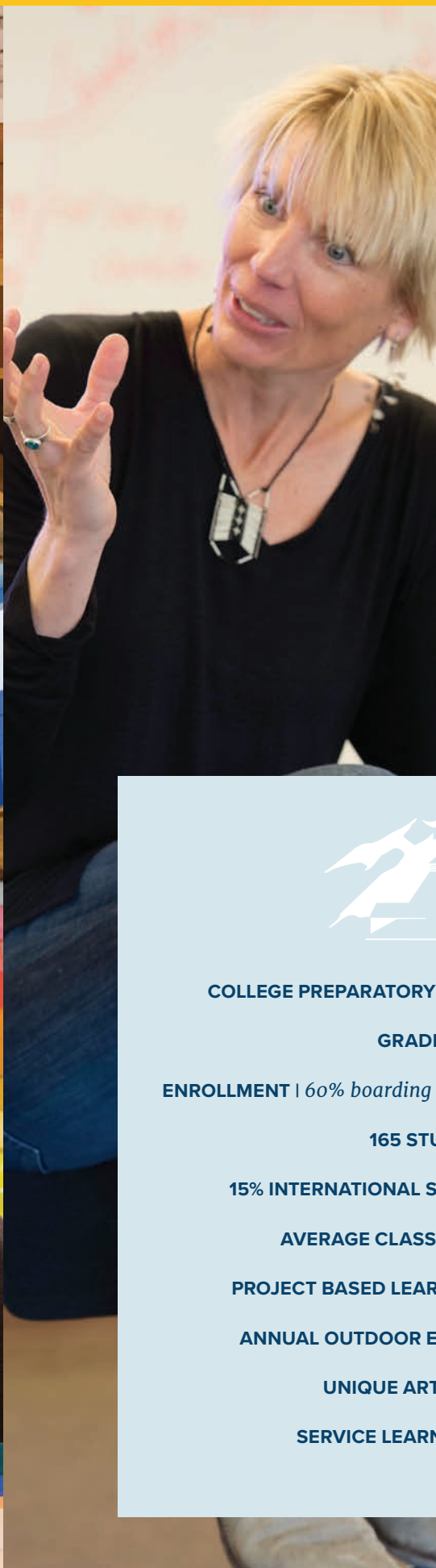
Students at CRMS have a voice and are encouraged to develop it. They lead and contribute to the conversations, shape school policy, their involvement is valued throughout the program; as a result, they are active participants in their own educational experience. When students are connected, seen, and heard, and are guided through this transformation with attentive adult mentors, they are better prepared to take on the greater independence they naturally seek. At CRMS, all our faculty and staff view it as a privilege to mentor students into their adult roles and prepare them for the academic challenges of college and life beyond. We understand this is our responsibility to fulfill with your student. Selecting a high school for your child is an incredibly important decision. Graduates of CRMS are intellectually curious, adventurous, creative, resilient, kind, and confident young adults. I encourage you to learn more about CRMS and our approach to education by contacting our Admission Office to begin this exciting journey!

My best,

Jeff Leahy  
HEAD OF SCHOOL







**COLLEGE PREPARATORY** | 100% college acceptance

**GRADES 9-12**

**ENROLLMENT** | 60% boarding students and 40% day students

**165 STUDENTS**

**15% INTERNATIONAL STUDENT ENROLLMENT**

**AVERAGE CLASS SIZE** | 12 students

**PROJECT BASED LEARNING OPPORTUNITIES**

**ANNUAL OUTDOOR EXPERIENTIAL TRAVEL**

**UNIQUE ART OFFERINGS**

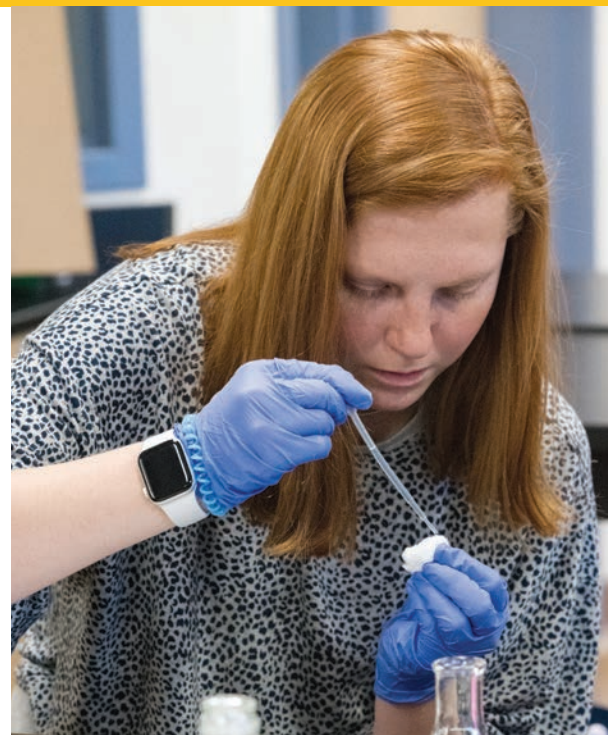
**SERVICE LEARNING PROJECTS**



# ACADEMIC PROGRAM

*Academics are the core of the Colorado Rocky Mountain School program and are the foundation for serving our students.*

We create a learning environment in which students discover their potential to excel as individuals, contribute to their communities, and thoughtfully participate in the world we share. We provide a liberal arts education; students pursue a challenging course of study and expand their limits across the curriculum. The CRMS curriculum goes beyond traditional academic courses, into athletics, service work, and travel, weaving connections across disciplines for a fully integrated learning experience. Our student-centered approach and low student-teacher ratio ensures an educational journey tailored to each individual student.



*Our curriculum emphasizes rigor, engagement, and depth.*

Students pursue mastery of their endeavors, and curious and compassionate exploration of knowledge. **All of our programming informs character development, especially the core values of respect, responsibility, and excellence—through awareness, attitude, and action.** Our students learn to think and act critically, creatively, collaboratively, and ethically through our intentional, balanced curriculum. **CRMS students develop the tools, knowledge, and resolve necessary to succeed in college and beyond, into the shifting demands of adulthood.**



*“CRMS students exhibit genuine curiosity, fully engage in academic problem-solving, and demonstrate the initiative to work collaboratively and independently. They graduate with the academic skills and mindset needed to thrive in college and beyond.”*

**Nancy Draina | Academic Dean**



**FACT: AVERAGE CLASS SIZE IS 12 STUDENTS | STUDENT TO TEACHER RATIO IS 4:1**

## Freshman Seminar

We recognize that our incoming freshmen are in a transition time from adolescence to early adulthood. We support them in the classroom, sports, and residential life to develop the skills they need to make this change successfully. Our dedicated freshman faculty team, freshman seminar, and structured daily study periods all work seamlessly together to support independence in their learning, life skills, and character development.

## Interim

Our February Interim week immerses students in rich, hands on experiential learning by doing. Interim course offerings have been: Volcanology in Hawaii, Social Justice in the Southern U.S., Spanish Immersion in Costa Rica, Ecology in the Bahamas, Horse Packing in the Grand Canyon, Handbuilding skis, Silversmithing with a Navajo Master Silversmith. We offer 14-15 different courses every year.

## Advanced Placement

We are intentional in our approach to offering AP courses. As an independent school which values depth and rigor in our coursework, we strike a balance between our AP class offerings, and our own rigorous, highly engaging courses. Our students perform extremely well on the AP exams; and many students also choose non-AP courses, as they have more freedom to pursue the depth of scholarship they seek in an independent education.

## Senior Project

Our seniors cultivate their passions and develop their sense of initiative and responsibility by creating, planning, and carrying out a 3 week, independent off-campus project, under the guidance of an adult mentor. Recent senior projects include: Architecture internship in New York City, Backpacking and photojournalism on the Arizona Trail, Rural Medical Clinic Volunteer in Nepal, Sharks and Conservation in Fiji, Mike Johnston for Governor Internship in Denver, English Education in Spain, Math Tutor at Island Youth Center in Hawaii, Children's Hospital Volunteer in Denver, Mission Wolf Volunteer in Colorado.





## COLLEGE COUNSELING AND PLACEMENT

*Colorado Rocky Mountain School offers a deliberate and individualized college counseling process to guide students and parents to matriculating to the college of their dreams.*

We understand well how to prepare your students to present themselves in an application to fully represent who they are at their best. We will help them to find their best fit, and achieve your family's college goals. CRMS students apply and matriculate to some of the most selective universities and colleges in the world.



*"The process of applying to college was daunting, but the college counseling program at CRMS was there to guide and support me. I am at my dream school and CRMS made it accessible, and made the rest of my life's potential possible. Thank you CRMS!"*

**Caleigh | Colorado College**



**FACT: 100% OF CRMS STUDENTS ARE ACCEPTED TO 4-YEAR COLLEGES AND UNIVERSITIES.**



*"At CRMS, we recognize and celebrate students' individual strengths. CRMS students transition confidently to college communities that fit their distinctive objectives, with the necessary tools to contribute and succeed."*

**Betsy Bingham-Johns**  
Director of College Counselor



### Select list of college acceptance over the last 3 years:

Bard College  
 Bates College  
 Baylor University  
 Berklee College of Music  
 Boston College  
 Boston University  
 Bowdoin College  
 Brandeis University  
 Brown University  
 University of California at Berkeley  
 University of California at Los Angeles  
 Chapman University  
 University of Colorado at Boulder  
 Colorado College  
 Colorado School of Mines  
 The Cooper Union  
 Columbia University  
 Dartmouth College  
 University of Denver  
 Duke University  
 Emerson College  
 Emory University  
 The George Washington University  
 Hampshire College  
 Johns Hopkins University  
 Massachusetts Institute of Technology  
 Middlebury College  
 University of Michigan  
 New York University  
 Oberlin College  
 University of Notre Dame  
 University of Oregon  
 Pomona College  
 Parsons New School for Design  
 Princeton University  
 Reed College  
 Rhode Island School of Design  
 St. Lawrence University  
 Santa Clara University  
 Sarah Lawrence College  
 Savannah College of Art and Design  
 Skidmore College  
 University of Southern California  
 Smith College  
 Syracuse University  
 The University of Texas, Austin  
 Tufts University  
 Tulane University  
 University of Vermont  
 Warren Wilson College  
 University of Washington  
 Wheaton College  
 Whitman College  
 University of Wisconsin  
 Yale University





# OUTDOOR AND SPORTS PROGRAMS

*The Outdoor Program at CRMS is an integral part of our students' complete academic experience, in which every student participates fully.*

We emphasize character development; students learn perseverance, teamwork, self-confidence, and empathy. Our students transfer these learnings to all areas of their lives, understanding and building on their strengths, and applying these skills to their challenges. Our students are deeply connected with nature, as well as their own personal well-being.

*There are three annual adventure outdoor trips, including:*

**Wilderness Orientation** – for all new students, who participate in this ten-day adventure in the Colorado high country.

**Fall Trip** – five days in October in the nearby mountains, deserts, and rivers.

**Spring Trip** – seven days in April, once again journeying to the beautiful Western wilderness areas.

*These trips provide an outdoor classroom, and also an opportunity for transferring skills of leadership, exploration, and camaraderie back into the academic setting.*





**FACT: ALL CRMS STUDENTS PARTICIPATE IN SPORTS TWO TO SIX DAYS A WEEK - INCLUDING SKIING!**



*The CRMS sports program empowers students of all abilities and experience levels to participate in a wide variety of sports unique to our mountain setting.*

We emphasize teamwork and development of the students own abilities to the highest level they desire. All students participate in a sport at least two days per week, and discover passions they can enjoy for a lifetime, from rock climbing, mountain biking, and kayaking to Alpine and Nordic skiing, to the horse program and yoga.

## CRMS Sports

Rock Climbing

Whitewater Kayaking

Mountain Biking

Horse Program

Soccer

Cross Country Running

Yoga

Tennis

Swimming

Snow sports:

Alpine and Freestyle Skiing

Snowboarding

Nordic Skiing

Telemark Skiing

Off-Piste Skiing





## SERVICE

*Community service is a core value, and a way of life, at Colorado Rocky Mountain School.*

Young adults are motivated to go beyond personal achievement to become productive, engaged members of society. When students take on contributing roles, they gain confidence and understand how to engage in a purposeful manner with the larger world. CRMS graduates truly exemplify the vision held by the Holdens when they founded CRMS in 1953: that a successful student recognizes the value in serving oneself and others and pursues excellence in every corner. On and off campus, every student experience is designed to be meaningful. Academics, wilderness adventures, physical work, community service, and residential life all integrate to give our students a comprehensive education.



**FACT: WE GROW OVER 14 TONS OF FRESH, LOCAL, ORGANIC, PRODUCE A YEAR FOR OUR STUDENTS AND FACULTY TO ENJOY IN OUR DINING HALL EVERY DAY.**





**FACT: CRMS STUDENTS DO OVER 10,000 HOURS OF COMMUNITY SERVICE EACH YEAR.**

## Service Opportunities

### Wilderness Orientation

New students begin the year with a ten-day backpacking Wilderness Orientation in the nearby mountains. The first three days of the trip are devoted to service with the US Forest Service. All service is completed by individual trip groups, not only to help the Forest Service and their trails, but also to help build a sense of teamwork and camaraderie before heading deeper into the wilderness for seven days together. With CRMS providing over 2,000 hours of USFS labor each year, it is clear that we take our community service seriously.

### Household Jobs

Unique to CRMS, and something that has been required of students since the school's beginning, are Household Jobs. By performing Household Jobs, the community contributes to the vital task of keeping the campus clean and tidy.

Students perform Household Jobs three times a week.

### Scholarship Work Day

Scholarship Work Day is an annual event that was initiated by students in 1965 to raise funds to help make a Colorado Rocky Mountain School education available to all students, regardless of their economic status. One day each spring, teams of CRMS students and faculty go to homes, ranches, and businesses around the community to do work. Scholarship Work Day exemplifies the CRMS core values of community service, respect, responsibility, and a strong work ethic while simultaneously raising funds for fellow students.

### Service Crews

#### Artisan

Glassblowing  
Blacksmithing  
Ceramics

#### Farm to Table

Horticulture  
Culinary  
Ranch

#### Scholastic

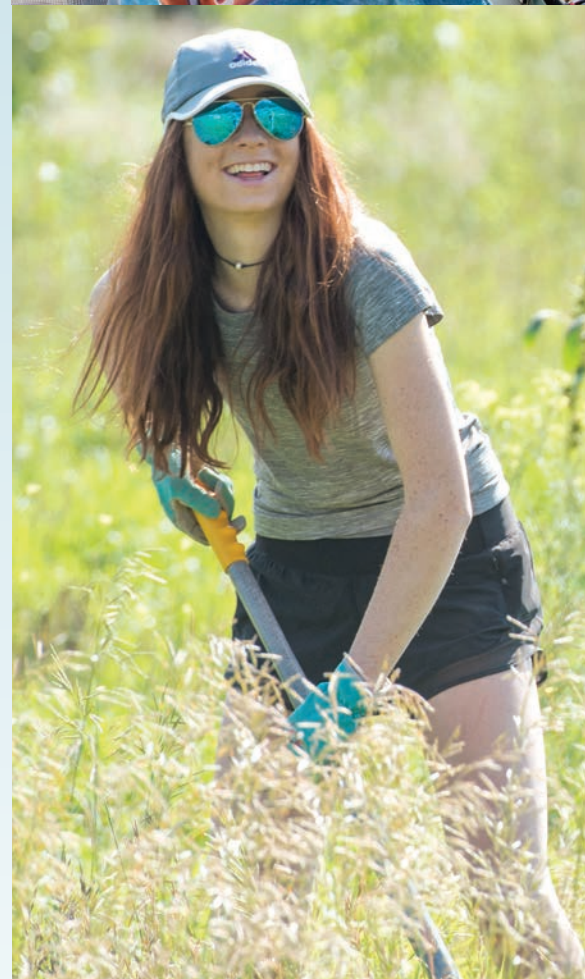
Peer tutoring  
Library  
Publishing and Photography  
Olive Branch:  
Social Justice  
Literary  
Publication

#### Conservation

Solar Hydrogen  
Research  
Colorado River  
Watch  
Recycling and  
Sustainability  
Trail Design  
and Building

#### Trades

Climbing Wall  
Route Setting  
Theater Set  
and Design  
Trip coordinator  
Bike mechanic  
Ski tuning





## THE ARTS

*All of our students access a diverse array of extraordinary arts on our campus.*

We offer glassblowing, silversmithing, and blacksmithing, in addition to the traditional high school art curriculum. **Each art has its own dedicated studio, enthusiastic teachers, and time for students to pursue their artistic passions.** Our faculty are practicing artists and encourage creative exploration of different mediums and engagement with the community, contributing to a broad liberal arts education.

Our program extends beyond the classroom and into our service crews, open studios, and performance opportunities at Coffee House, All School Meeting, Concerts, and off campus at local venues.

Some of our students go on to design and art colleges on their way to a profession in the arts, others discover a new side of themselves here in the creative realm and apply those lessons to the rest of their learning and lives.





**FACT: OUR STUDENTS CREATE ALL OF THE GLASSWARE FOR OUR DINING HALL  
IN OUR GLASSBLOWING STUDIO.**



## Arts Offerings at CRMS

Music  
Glassblowing  
Drama  
Photography  
Silversmithing  
Drawing and Painting  
Graphic Design  
Blacksmithing  
Ceramics  
Videography



## STUDENT LIFE

*The rich student life on campus is a natural result of our emphasis on healthy community, and close relationships between students and with faculty.*

Our students come from diverse backgrounds geographically, culturally, and socioeconomically, and the healthy culture on campus gives them a safe place to feel engaged, learn to their potential, and be accepted for who they are, while being supported and challenged by their educational experience.

**Our campus culture is friendly, open-minded, adventurous, and kind.** These attributes are integrated into the CRMS experience – from trips and service crews to advisor groups and leadership positions, our students are exposed to different situations and people in ways that support their development into contributing community members. All of our day and boarding students feel this daily; the Community is interwoven together.



### Leadership

Agenda (our elected student government), Policy Panel, Discipline Committee, Justice League, Wilderness Assistants, Dorm Heads, Outdoor Trip Leadership, Household Job Captains – if you are interested in leadership, we provide a wide array of opportunities to influence and better our community.

### Advisory

All of our students are members of a small advisory group of 6–10 students; advisors serve as advocates for their advisees in all areas of their school life and meet multiple times every week. This means every student has built-in connections with an encouraging adult and caring peers throughout their career here, resulting in a highly supportive environment.

### All School Meeting

Our energetic weekly gathering of students and faculty alike, and a school favorite! These meetings reflect the values and actions that we live by, and include a student performance, Senior speech, awards, community announcements, time for gratitude and accountability, and a lot of cheering and applause.

### Awards and Recognition

Honor Roll, Holden Citizen, CRMS Citizen, Braj Award – it may be for grades, citizenship, or simply being kind – we recognize and honor our students.



## RESIDENTIAL PROGRAM

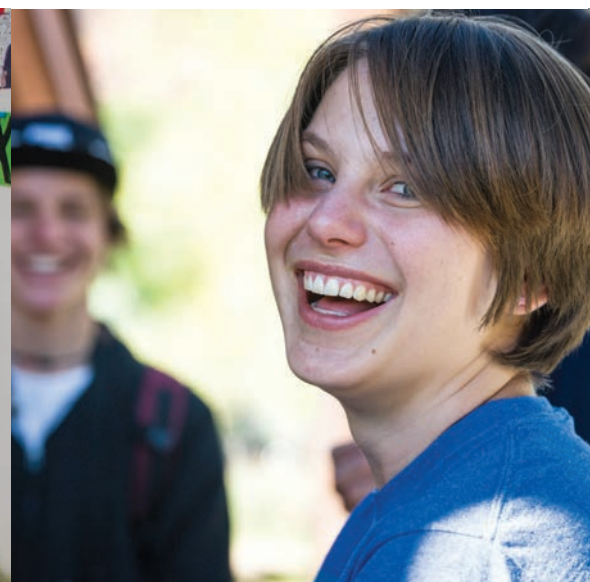
*Our residential program strikes a balance between nurturing and supporting students living away from home, and giving them opportunities to develop their independence and expand their life skills.*

We modulate the expectations according to age and grade, giving developmentally appropriate responsibilities as students are ready. **Our students learn to self-advocate, collaborate, and resolve conflict in a peaceful manner.** Our boarding students benefit from having a structured study period on weekday evenings, and their peers and teachers available to help with projects or homework on a nightly basis.

Since our faculty all live on campus and also serve as dorm parents, trip leaders, and athletic coaches, they become close mentors for students and a familial atmosphere organically develops among students and faculty alike.

### Weekends at CRMS

Weekends are packed with fun activities ranging from outdoor adventures such as peak ascents, biking, whitewater kayaking, climbing, and backcountry ski hut trips, to local hot springs, movies, bowling, lawn games, art and craft projects, to fly tying, cookie baking, and shopping at the local grocery or department store. Our students have much to choose from, they can be as busy as they like, or are free to catch up on schoolwork, rest, or socialize. Faculty play alongside our students all weekend long.



*"I chose CRMS because I believe it is a place where I will be challenged academically, thrive and grow as a person, and become prepared for college and adult life."*

**Addy | Incoming Student**



## MOUNTAIN CAMPUS

Colorado Rocky Mountain School is situated in the heart of the majestic West, on the outskirts of Carbondale (elevation 6,100 feet), a vibrant and charming small mountain town located 30 miles from renowned Aspen, CO. The schools' vast 300-plus acre property sits in the shadow of 13,000-foot Mount Sopris at the confluence of two rivers. Carbondale is a unique blend of small community charm and world-renowned outdoor recreational offerings – the ideal setting for the CRMS program.

We are 30 minutes by car to Aspen Airport, 1 hour to Eagle/Vail Airport, 1.5 hours to Grand Junction Airport, and 3 hours to Denver International Airport.

**FACT: THE CRMS CAMPUS SITS AT THE CONFLUENCE OF TWO OF THE MOST SCENIC RIVERS IN COLORADO; THE CRYSTAL AND THE ROARING FORK, BOTH WITHIN WALKING DISTANCE OF CAMPUS, ALLOWING AVID PADDLERS AND FISHERMAN PLENTY OF OPPORTUNITY TO ACCESS THE WATER!**









## ARE YOU READY FOR THE NEXT STEP?

*We are looking for students who are excited about learning, want to be engaged in their school community, are seeking adventure and who are kind, thoughtful and open-minded.*

*If CRMS sounds like a place you want to be, we want to connect with you.*

### Applying to CRMS:

1. Open an online application account through our website at: [www.crms.org/apply](http://www.crms.org/apply)
2. Complete the student and parent questionnaires
3. Request three teacher recommendations
4. Submit a school transcript
5. Register for and take the Secondary School Admission Test (SSAT)
6. Visit campus and interview with an Admission Officer  
(Video conference interviews are available if an in person visit is not possible.)

**Priority application deadline is February 1st.**

(Applications submitted after the posted deadline will be reviewed on a rolling basis depending on space availability.)





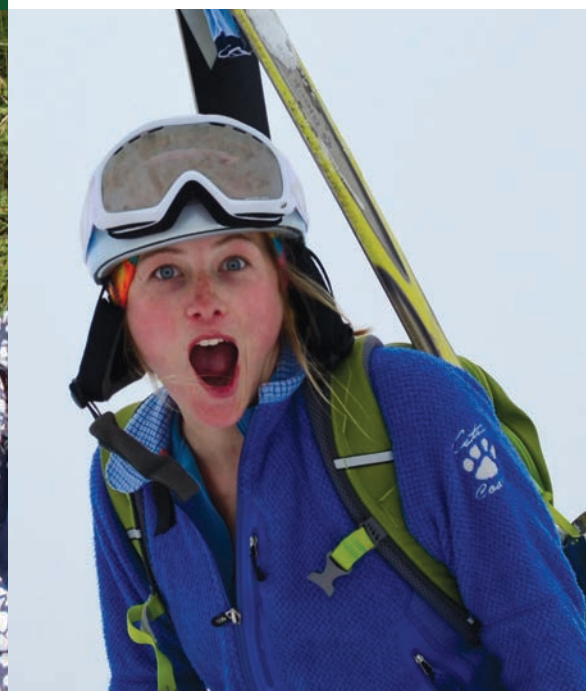


*“CRMS represents the things we value as a family: strong community, growing a good person, academic excellence, and outdoor adventure. We believe our daughter will absolutely thrive in this environment.”*

**Parent of a Boarding Student**

## ***Financial Aid***

An independent school education can require a significant financial investment, but at CRMS we aim to make the school accessible through a generous financial-aid program. Through the school's commitment to need-based financial aid, CRMS offers institutional grants and several payment plan options to help families make this a reality for their student. CRMS uses School and Student Services ([www.solutionsbyss.com](http://www.solutionsbyss.com)) to process financial-aid applications. In addition to completing a Parent Financial Statement, families are also required to submit tax returns from the previous two years. Detailed information about the financial-aid program can be found on our website.







LET THE ADVENTURE BEGIN.



CRMS.ORG