

Interim Head of School

Pamela Clarke – pclarke@kua.org

Assistant Head of School

David Weidman – dweidman@kua.org

Academic Dean

Tom Kardel – tkardel@kua.org

Dean of the Faculty

Julie Haskell – jhaskell@kua.org

Accreditation

New England Assoc. of Schools and Colleges

CEEB Code: 300400

Website: www.kua.org



P.O. Box 188 Meriden, New Hampshire 03770

Director of College Advising

Derek Gueldenzoph – dgueldenzoph@kua.org

College Advisors

Jennifer Blue – jblue@kua.org

John Kluge – jkluge@kua.org

Kay McCabe – kmccabe@kua.org

Mike Olson – molson@kua.org

Raymond Webb – rwebb@kua.org

Whit Willocks – wwillocks@kua.org

Office Manager

Heather Vogel – hvogel@kua.org

College Advising Phone: 603-469-2170

PROFILE 2018-2019

THE ACADEMY

Kimball Union Academy was founded in 1813 and is an independent, co-educational, secondary boarding school. Our gorgeous 1300 acre rural campus is located in the heart of the Upper Valley Region that is anchored by Dartmouth College. Kimball Union has a Cum Laude Society chapter, which was founded in 1944. Kimball Union is accredited by the New England Association of Schools and Colleges and has the distinction of being the fifteenth oldest boarding school in the country.

MISSION AND VALUES

Guided by our mission of “inspiring academic mastery, creativity, responsibility, and leadership,” Kimball Union prepares students to be successful in a rapidly changing world.

Our students strive for academic excellence and graduate from Kimball Union having had life-enhancing experiences of intellectual growth, leadership, and self-discovery. Led by a devoted and accomplished faculty, Kimball Union students are equipped with the academic and social skills needed to serve a lifetime of extraordinary achievement and contribution. The diverse perspectives of all our students are broadened through individual engagement in the arts, athletics, and residential life on campus and across the globe. Kimball Union is known for building character through community engagement and a vast and innovative curriculum.

OUR HONOR CODE

As a member of the Kimball Union community, I promise to uphold a code of honor, to expect and to encourage the same of others, and to do so in all situations and in all places. This code of honor includes being honest in all matters, behaving with integrity, and demonstrating respect for myself and others.

GRADUATION REQUIREMENTS

The Academy requires nineteen credits of academic work for graduation. They must include the following:

English (4 credits)	History (3 credits)
Mathematics (3 credits)	Science (3 credits)
Languages (3 credits)	Arts (1 credit)

Students are required to participate in three afternoon activities per year, two of which must be team-oriented activities requiring group participation and the realization of a common goal.

THE FACULTY

- ❖ 53 teachers, 66% of whom hold advanced degrees
- ❖ 6:1 Student to teacher ratio
- ❖ Average class size is 11

THE STUDENT BODY

- ❖ 335 students, 190 boys and 145 girls
- ❖ 253 boarding students (76%)
- ❖ 94 seniors, including 10 postgraduates
- ❖ Students from 24 states (plus D.C.) and 22 countries
- ❖ 35% receive need-based financial aid
- ❖ \$32,024 average grant
- ❖ 100% of graduates attend 4-year colleges/universities

COURSE LOAD

- ❖ Three academic trimesters: Fall, Winter, Spring
- ❖ Students take five academic courses each term; most classes are year-long, although some are one- or two-trimester electives
- ❖ Students may take a sixth academic core with permission from the Academic Dean
- ❖ Admission to Honors and AP courses is selective and requires the approval of the Academic Department Chair
- ❖ The average student graduates with two AP courses

MARKING SYSTEM

The Academy uses an *unweighted* four-point system. All graded courses are included in the GPA. Only courses taken at KUA are computed in the GPA. GPA for each year is determined at the end of that year. At the close of the first trimester of senior year, GPA is figured for that trimester alone.

A = 93-100 = 4.00	A- = 90-92 = 3.67	B+ = 87-89 = 3.33
B = 83-86 = 3.00	B- = 80-82 = 2.67	C+ = 77-79 = 2.33
C = 73-76 = 2.00	C- = 70-72 = 1.67	D+ = 67-69 = 1.33
D = 63-66 = 1.00	D- = 60-62 = 0.67	
F = 0-59 = 0.00		

Honor Roll is a minimum GPA of 3.00, no grade below B-.

High Honor Roll is a minimum GPA of 3.5, no grade below B.

Given the size of our senior class, small differences in GPA often represent significant differences in rank. Therefore, Kimball Union Academy does not rank students.

ADVANCED COURSES OFFERED

ENGLISH

Global Issues Since the Fall of the Wall (H)
Global Literature (H)
Humanities (H)
AP Language & Composition
AP Literature & Composition
Literature of the American Dream (H)
The Anti-Hero in Literature (H)

WORLD LANGUAGES

French III (H)
French IV (H)
French V
AP French
AP Latin
Spanish III (H)
Spanish IV (H)
Spanish V
AP Spanish

MATHEMATICS

Algebra II (H)
AP Calculus AB
AP Calculus BC
AP Computer Science A
Geometry (H)
Multivariable Calculus
Precalculus AB (H)
Precalculus BC (H)
AP Statistics

HISTORY

AP Art History
AP Economics
European History (H)
AP European History
Global Issues Since the Fall of the Wall (H)
Humanities (H)
US History (H)
AP US History
AP World History

SCIENCES

Anatomy & Physiology (H)
Biology (H)
AP Biology
Biomedical Engineering (H)
Chemistry (H)
AP Chemistry
AP Environmental Science
Physics (H)
AP Physics II
Science Research and Engineering Design

ARTS

Advanced Ceramics
Adv. Dance: Tech & Composition
Advanced Studio Art
Advanced Theatre
AP Art History
AP Music Theory
AP Studio Art

SIGNATURE PROGRAMS

Global Scholar

--Two-year certificate-based program for juniors and seniors
--Increased interdisciplinary coursework on global themes and 6-times a year evening Seminar
--28 days of overseas study and/or travel
--Community service
--Senior Capstone

Arts Scholar

--Two-year certificate-based program for juniors and seniors
--In-depth study of one discipline or a broad exposure to the arts and 6-times a year evening Seminar
--Significant off-campus work in a field of the arts
--Community service
--Senior Capstone

STEM Scholar

--Two-year certificate-based program for juniors and seniors
--Increased interdisciplinary coursework in STEM and 6-times a year evening Seminar
--Significant scientific research and/or off-campus internship
--Community service
--Senior Capstone

The Senior Capstone Program

--Available to seniors to pursue in-depth independent study project
--2000/4000 word required research paper, depending on the nature of the project
--Mentored by a faculty member on-campus as well as an expert in the field

The Cullman Scholarship

--One of the highest, most competitive honors at Kimball Union,
--Awarded to approximately 6% of juniors and less than 1% of sophomores
--Supports summer enrichment to develop leadership skills, global and environmental awareness, and take advantage of unique educational opportunities

Global Alliance for Innovative Learning (GAIL)

--A consortium of 8 schools all over the world committed to cross-cultural understanding, global awareness, and citizenship
--Student exchange between schools from several weeks to an entire academic year
--Annual GAIL convention for selected students to support leadership and collaboration skills

K-Term

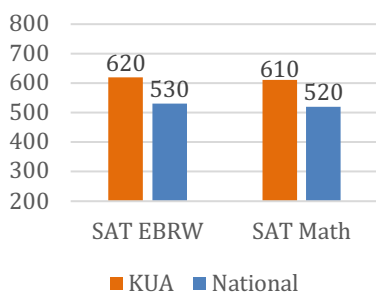
--A week-long experiential, project-based period
--9th grade students participate in placed-based projects near campus
--10th grade students travel to Washington, DC to complete one of two projects
--11th and 12th grade students select small faculty-led projects on or off campus

Writing Across the Curriculum

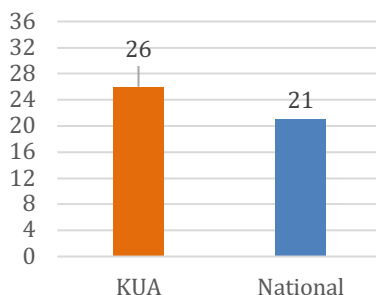
--A student portfolio of writing samples selected from at least three different academic departments
--Includes a student self-reflection
--All juniors must pass the Junior Writing Portfolio, with the possibility for Honors recognition



Average SAT



Average ACT



AP Exams

Year	Students	Exams	% 3 or Higher
2015 - 2016	116	234	74%
2016 - 2017	116	231	71%
2017 - 2018	89	167	75%

Class of 2019 Cumulative GPA Distribution
(through end of junior year)

GPA Range	Number of Students
4.00	2
3.67 – 3.99	29
3.34 – 3.66	24
3.00 – 3.33	15
2.67 – 2.99	12
2.34 – 2.66	3
2.00 – 2.33	1
Below 2.00	0

KUA GRADUATES CAN...

COMMUNICATION

- ...select the appropriate medium for self-expression.
- ...compose persuasive, analytical, descriptive, personal, and creative pieces.
- ...express themselves compassionately and truthfully.
- ...curate a digital presence.

COLLABORATION

- ...listen to the ideas of others.
- ...contribute wholeheartedly to a group endeavor.
- ...work together to realize the group's potential.
- ...give and receive honest and thoughtful feedback.

GLOBAL AWARENESS

- ...understand and communicate in a second language.
- ...expand their world view.
- ...explain global events from multiple perspectives.
- ...live productively and respectfully in a diverse community.
- ...steward the environment.

PROBLEM SOLVING

- ...identify and address a challenge.
- ...tolerate ambiguity and persist through discomfort.
- ...seek resources and develop a plan.
- ...implement a solution and evaluate results.

CREATIVITY

- ...imagine, explore, and innovate.
- ...engage in the iterative process of creation.
- ...make art.

CRITICAL THINKING

- ...ask relevant questions.
- ...research effectively.
- ...analyze for patterns and anomalies.
- ...evaluate for bias, relevance, and reliability.
- ...verify and defend conclusions.

HEALTH & WELLNESS

- ...choose healthy practices.
- ...maintain physical, emotional, social, and spiritual balance.
- ...navigate social influences.
- ...build only positive relationships.
- ...advocate for self and others.

LEADERSHIP & COMMUNITY BUILDING

- ...engage with and contribute to their community.
- ...identify a need and articulate a vision.
- ...motivate and organize a group to effect change.

PERSONAL GROWTH & DEVELOPMENT

- ...demonstrate empathy.
- ...think and act independently.
- ...accurately and compassionately self-assess.
- ...accept ownership for their actions.
- ...summon courage.



COLLEGE AND UNIVERSITY MATRICULATION – CLASSES OF 2015, 2016, 2017 and 2018

During the past four years, 396 graduates matriculated to the following colleges and universities, while 13 students chose a different path: postgraduate year, junior hockey, work, international travel/study, military, or other alternatives before beginning postsecondary education.

American University (3)	Kenyon College (3)	The College of Wooster
Appalachian State University	Lafayette College (2)	The George Washington University (2)
Babson College (6)	Lake Forest College (2)	The University of Arizona (2)
Bates College (2)	Lehigh University (3)	The University of Findlay
Beloit College	Lesley University	The University of Tampa
Bentley University	Loyola Marymount University	Towson University
Berklee College of Music	Loyola University Chicago	Trinity College (4)
Binghamton University	Loyola University Maryland	Tufts University (2)
Boston College (4)	Lynn University	Tulane University (2)
Boston University (12)	Marion Military Institute	Union College (New York)
Bowdoin College (2)	Marist College	United States Military Academy - Army
Brandeis University (4)	Massachusetts Maritime Academy (2)	United States Naval Academy (3)
Brown University (2)	McGill University (3)	Unity College
Bryant University	MCPHS (2)	Universidad Alfonso X el Sabio
Bucknell University	Mercyhurst University	Universidad Antonio de Nebrija
Carleton College	Merrimack College (2)	Universite d'Angers
Carnegie Mellon University (6)	Michigan State University (2)	Universiteit van Amsterdam
Case Western Reserve University	Middlebury College (5)	University of California, Los Angeles
Champlain College (2)	Montana State University, Bozeman	University of California, Santa Barbara
Chapman University (2)	Mount Holyoke College (3)	University of Chicago (2)
Claremont McKenna College (2)	New York University (7)	University of Colorado at Boulder (2)
Colby College (4)	Norfolk State University	University of Connecticut (4)
Colgate University	Northeastern University (11)	University of Denver (2)
College of Charleston (2)	Northwestern University (2)	University of Hartford
College of Southern Nevada	Norwich University (4)	University of Illinois at Chicago
College of the Holy Cross (2)	Oberlin College of Arts and Sciences (2)	University of Maine
College of William and Mary (2)	Ohio University	University of Maryland, College Park (2)
Colorado College	Pennsylvania State University (5)	University of Massachusetts, Amherst (3)
Connecticut College (5)	Pepperdine University	University of Massachusetts, Boston
Curry College	Plymouth State University	University of Massachusetts, Lowell
Denison University	Pratt Institute	University of Murcia
DePaul University	Providence College (2)	University of New England
Dickinson College (5)	Purdue University (2)	University of New Hampshire (15)
Drew University	Queen Mary University of London	University of Oregon
Drexel University	Queen's University	University of Phoenix
Eckerd College (4)	Quinnipiac University (3)	University of Pittsburgh
Elmira College	Reed College	University of Puget Sound
Elon University (7)	Rhode Island School of Design	University of Rochester
Emory University (2)	Rochester Institute of Technology	University of San Francisco
Endicott College (5)	Rollins College	University of South Carolina
ESADE	Saint Anselm College (3)	University of St Andrews
Florida Gulf Coast University	Saint Michael's College (6)	University of Toronto
Florida Institute of Technology	Salve Regina University (2)	University of Utah
Florida Southern College	San Diego State University	University of Vermont (17)
Fordham University (3)	San Francisco Art Institute	University of Washington (3)
Franklin & Marshall College (2)	Santa Clara University	University of Wisconsin, Madison (4)
Furman University (2)	Sarah Lawrence College	USMA Panama
Georgia Institute of Technology	Savannah College of Art and Design (2)	Utah State University
Gettysburg College (3)	School of the Art Institute of Chicago	Vanderbilt University
Gordon College	School of Visual Arts	Villanova University
Goucher College	Skidmore College (11)	Wake Forest University (3)
Hamilton College - NY (2)	Smith College (2)	Washington University in St. Louis
Haverford College	Southern Methodist University	Wesleyan University
High Point University	St. Lawrence University (12)	Wheaton College MA (3)
Hobart and William Smith Colleges (5)	Suffolk University (2)	Whitman College
Hult International Business School - London	SUNY Plattsburgh	Williams College
Indiana University at Bloomington	Syracuse University (4)	Worcester Polytechnic Institute (2)
Indiana University of Pennsylvania	Temple University	Yale University
Ithaca College (4)	Texas Christian University	
Keene State College	The Catholic University of America (2)	